

KS12-16 **Extenda**Chip

Extending Chip Spreader from 12ft to 16ft



DESIGNED FOR SAFE AND EASY OPERATION

The Pavemac KS12-16 Extendachip is a new innovative design in the market, designed with a focus on safety. A review of the root causes of past incidents surrounding chipper operations has led to significant investment into the improvement of the aggregate chip spreader. Operational reliability, enhanced controls, manoeuvrability and ease of operation are all key to the development of the new KS12-16.

Incorporating the latest Kubota Tier4 emissions engine the revolutionary new KS12-16 is manufactured with maximum safety features and low environmental impact.

The intuitive controls make the machine easy to work with, and provide optimum operator comfort.

OPERATIONAL

- Large Capacity hopper reduces load cycle
- Digital controlled shut off gates
- Augers separately controlled
- Hydrostatic track drive
- Automatic feed control of front hoppers

ENVIRONMENTAL

- Low noise level
- Low fuel consumption
- Low ground bearing pressure
- Tier4 low emissions engine

SAFETY

- Good sight lines & low load height
- Integral disc brakes
- Operator ride-on platform
- Fully guarded moving parts

ERGONOMICS

- Powered by 18 kW engine
- Compact for easy transport
- Soft stop & start
- Remote control handset for loading
- Extendable to operate at 5 widths

SERVICEABILITY

- Easy access
- Long service intervals

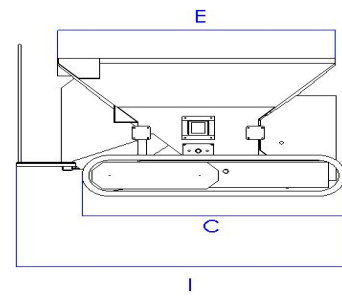
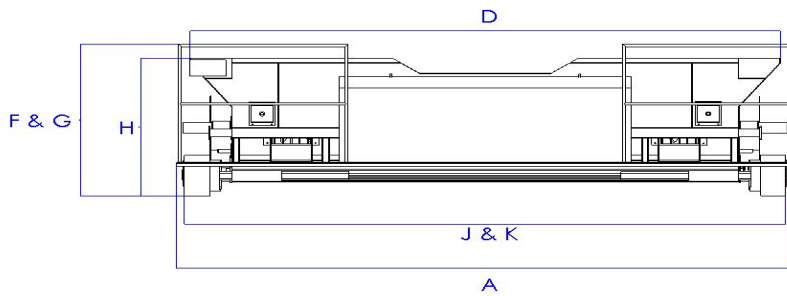
BENEFITS

- One machine can operate at 5 paving widths
- Easy to operate with stand on operator platform and dual controls
- Low noise, low emissions, low vibration
- Hi and lo range for controlled operation and fast movement on site
- Track drive system for low ground bearing pressure and stability

Pavemac Ltd
Eastwood End, Wimblington
Cambs. PE15 0QH
Tel. 01354 740170
Email: Sales@pavemac.com
For additional product information and services please visit Pavemac.com
Specifications are subject to change.

pavemac

KS12-16 Extenda**Chip**



WEIGHT & DIMENSIONS

WEIGHT (empty)	4300 kg
I. MACHINE LENGTH	2550 mm
I. TRANSPORT LENGTH	2550 mm
C. TRACK LENGTH	1800 mm
E. HOPPER LENGTH	2000 mm
D. HOPPER WIDTH	4253 mm
G. TRANSPORT HEIGHT	1395 mm
G. MAX WORKING HEIGHT	1395 mm
H. MATERIAL LOAD HEIGHT	1260 mm
A. TRANSPORT WIDTH	4455 mm
J. TRACK GAUGE WIDTH - MINIMUM	4252 mm
K. TRACK GAUGE WIDTH - MAXIMUM	5427 mm
MAX. APPROACH ANGLE	15.5° (front) / 10° (back)

Patent Pending

HOPPER CAPACITY	5 cu/mtrs
HOPPER DUMPING HEIGHT	1260 mm
GROUND CLEARANCE	185mm
HOPPER WIDTH, INTERNAL	2000 mm
AUGER DIAMETER -MAIN	230 mm
AUGER DIAMETER- CROSSFEED TO EXTENSIONS	180 mm
AUGER CONTROL	Manual and Automatic with limit switches
WIDTH ADJUSTMENT	Hydraulic
HEIGHT ADJUST	Hydraulic on main/manual on ext
MANUAL CHIP DISTRIBUTION	By access Trays at Rear

CAPACITY & PERFORMANCE

CHIPPING SPEED (MAX.)	20 m/min
TRANSPORT SPEED (MAX.)	3.0 km/h

ENGINE

ENGINE MODEL	Kubota V1505
RATED POWER @ 2200 RPM	18 kW
EMISSIONS	Tier 4 final
ELECTRICS	12volt
FUEL TANK CAPACITY	40 l

OPERATOR STATION

DASHBOARD	Conventional control
PLATFORM	With back rest for operator safety
LOADING	Detachable Handset

CRAWLER

CRAWLER LENGTH (AXLE TRACK)	1800 mm
CRAWLER WIDTH (PADS)	205 mm

FINAL DRIVE	Direct drive over transmission
BASIC WIDTH	12ft
HYDRAULICAL EXTENDED WIDTH	Variable Between 12ft and 16ft in 1ft Increments
CHIPPING SPEED	Variable up to 20 mtrs/min
TRAVEL SPEED	2 Speed control up to 3 km/hr
CONTROL GATES	Hydraulically operated with Digital Readout.



Pavemac Ltd
Eastwood End, Wimblington
Cambs. PE15 0QH
Tel. 01354 740170
Email. Sales@pavemac.com

For additional product information and services please visit Pavemac.com

Specifications are subject to change.

DOC REF: MO/EC/SSS/NEW

pavemac

ISSUE 1 - 17 JUNE 2019